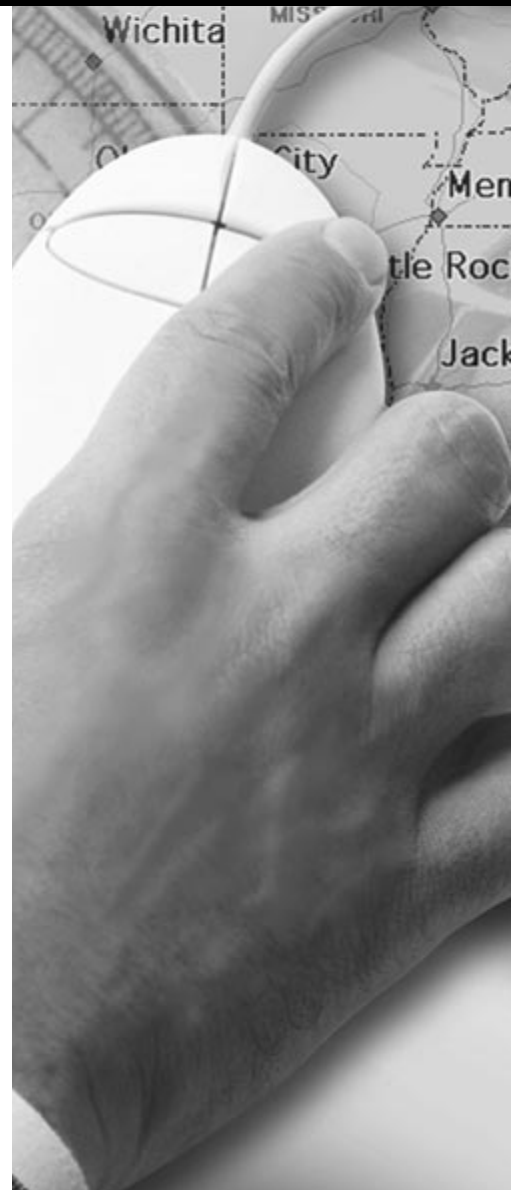




# COMMAND for Windows

*User Guide*



CAMBIO  
NETWORKS

**המחמה™**

© 1987–1997 Cambio Networks Inc.

All Rights Reserved.

No part of this publication may be reproduced, transmitted, stored in a retrieval system, or translated into any human or computer language, in any form or by any means—electronic, mechanical, magnetic, optical, chemical, manual, or otherwise—without the prior written permission of the copyright owner, Cambio Networks, Inc.

#### U.S. GOVERNMENT RESTRICTED RIGHTS

This software and documentation are provided with restricted rights. Use, duplication or disclosure by the government is subject to restrictions as set forth in subparagraph (c)(1)(ii) of the rights in technical data and computer software clause at dfars 252.227-7013 or subparagraphs (a)-(d) of the commercial computer licensed technology-restricted rights at 48 cfr 52.227-19, as applicable. This software is unpublished under the copyright laws of the united states. All rights reserved.

COMMAND™, the Cambio logo, and the COMMAND product mark are trademarks of Cambio Networks, Inc.

Microsoft®, Windows® and Windows NT® are registered trademarks of Microsoft Corporation.

All other trademarks and tradenames are the property of their respective owners. All specifications are subject to change without notice.

Part # WCMDUSR COMMAND

# CONTENTS

<b>Contents</b> .....	<b>iii</b>
<b>Figures</b> .....	<b>x</b>

## **Chapter 1**

<b>COMMAND Network Documentation System</b> .....	<b>1-1</b>
<b>What Is the COMMAND Server?</b> .....	<b>1-3</b>
<b>What Is COMMAND API Gateway?</b> .....	<b>1-4</b>
<b>What Is COMMAND Administrator?</b> .....	<b>1-4</b>
<b>What Is COMMAND View?.</b> .....	<b>1-6</b>
<b>What Is COMMAND InfoManager?</b> .....	<b>1-6</b>
<b>What Is COMMAND ReportWorks?</b> .....	<b>1-7</b>
<b>What Is COMMAND for Windows?</b> .....	<b>1-8</b>
<b>What Is COMMAND Viewer for Windows?</b> .....	<b>1-9</b>

## **Chapter 2**

<b>System Basics</b> .....	<b>2-1</b>
<b>Preliminary Setup in the COMMAND Database</b> .....	<b>2-2</b>

**What Is COMMAND for Windows? . . . . . 2-2**

**What Is COMMAND Viewer for Windows? . . . . . 2-4**

**What Are Projects? . . . . . 2-4**

**What Are Locations and Drawings? . . . . . 2-5**

**What Is the LOST&FOUND Location? . . . . . 2-6**

**What Are Network Components? . . . . . 2-7**

**What Are Ports? . . . . . 2-8**

**What Are Cables? . . . . . 2-8**

**What Are Cable Lines? . . . . . 2-9**

**What Are COMMAND Attribute Tables? . . . . . 2-9**

**Chapter 3**

**Getting Started . . . . . 3-1**

**Starting and Quitting COMMAND for Windows. . . . . 3-2**

*To start COMMAND for Windows . . . . . 3-2*

*To quit COMMAND for Windows. . . . . 3-3*

**Starting and Quitting COMMAND Viewer for Windows. . . . . 3-3**

*To start COMMAND Viewer for Windows . . . . . 3-3*

*To quit COMMAND Viewer for Windows. . . . . 3-5*

**Working with Projects. . . . . 3-5**

*To open a project. . . . . 3-6*

*To close a project. . . . . 3-6*

**Using the COMMAND Window. . . . . 3-6**

*To select the Equipment or Connections view. . . . . 3-8*

*To resize the views in the COMMAND window. . . . . 3-8*

*To refresh the equipment or connections display. . . . . 3-8*

<i>To change column width in the grid</i> .....	3-9
<i>To change row height in the grid</i> .....	3-9
<i>To display or hide the status bar</i> .....	3-9
<i>To display or hide the toolbar</i> .....	3-9
<b>Working with Locations</b> .....	<b>3-10</b>
Working in the Locations View .....	3-10
<i>To expand or collapse the project folder and the drawings in the Locations view</i> .....	3-11
Setting Initial Locations .....	3-11
<i>To set an initial location</i> .....	3-12
Finding Locations .....	3-15
<i>To find a location</i> .....	3-15
Selecting Locations .....	3-18
<i>To select locations</i> .....	3-18
<b>Using the Equipment and Connections Views</b> .....	<b>3-19</b>
Working in the Equipment View .....	3-19
Working in the Connections View .....	3-21
Showing Connections .....	3-23
<i>To show connections</i> .....	3-24
<b>Finding Equipment</b> .....	<b>3-25</b>
Finding Equipment Directly .....	3-25
<i>To find equipment directly</i> .....	3-26
Finding All Equipment in Locations You Select .....	3-26
<i>To find all equipment in locations you select</i> .....	3-27
Finding Certain Equipment in Locations You Select .....	3-28
<i>To find certain equipment in locations you select</i> .....	3-29
<b>Selecting Equipment or Connections in a Grid</b> .....	<b>3-32</b>
Selecting Items in a List or in the Grid .....	3-32
<i>To select all equipment or connections in a grid</i> .....	3-32

**Copying, Saving, or Printing Grid Information. . . . . 3-33**

- Copying Information in the Grid to Another Application. . . . . 3-33
  - To copy information in the grid to another application . . . . . 3-34*
- Saving Information in the Grid as a .CSV File . . . . . 3-34
  - To save information in the grid as a .CSV file . . . . . 3-35*
- Printing Equipment or Connections in a Grid . . . . . 3-35
  - To preview a print job . . . . . 3-35*
  - To print all equipment or connections in a grid . . . . . 3-36*

**Using Change Logs. . . . . 3-36**

- To open a change log. . . . . 3-37*
- To close a change log. . . . . 3-37*

**Running CCIs. . . . . 3-37**

- To run a CCI. . . . . 3-38*

**Viewing Online Help and COMMAND Documents. . . . . 3-38**

- Viewing Online Help and the COMMAND Online Documentation. . . . . 3-38
  - To view the COMMAND online documentation. . . . . 3-39*

**Chapter 4**

**Loading Information into the Repository . . . . . 4-1**

**Bulk-Adding Information . . . . . 4-2**

- Bulk-Adding Equipment . . . . . 4-2
  - To bulk-add equipment . . . . . 4-2*
- Bulk-Adding Equipment Example . . . . . 4-3
- Bulk-Adding Connections. . . . . 4-4

**Importing Information . . . . . 4-4**

- Importing Equipment or Connections. . . . . 4-4
  - To import equipment or connections. . . . . 4-5*

# Chapter 5 | Documenting Your Network

You can do the following network documentation operations with COMMAND for Windows:

- Adding equipment. Initially, when your organization sets up the COMMAND Network Documentation System, you can use COMMAND for Windows to do bulk-add operations to help load the repository. After that, you can add equipment to the repository at any time.
- Editing equipment attributes. You can edit equipment attributes in tables already set up for you. You can edit attributes as you add equipment to the repository, or later, when you want to change information stored in attributes for equipment already in the repository.
- Moving equipment. You can move equipment from one location to another and from multiple locations to one location, or you can move equipment into or out of the LOST&FOUND location for your project.
- Changing equipment. COMMAND for Windows lets you perform changes. You can add ports, rename equipment and ports, and delete equipment.
- Connecting ports between devices or within one device. You can do one-to-one, one-to-many, and many-to-many connections. As you make the connections, you can choose whether to use new or existing standard cables, or generic cables.
- Disconnecting ports. You can select ports to disconnect, or you can disconnect all ports on selected devices.

COMMAND for Windows helps a variety of users perform their network documentation tasks. For example, help desk personnel can use COMMAND for Windows to trouble-shoot network problems. Field technicians can plug into the network and use COMMAND for Windows to get the information they need for tasks such as adding devices to equipment closets. And network planners can use the program to find the detailed information they need for analysis and reporting tasks.

## Moves, Adds, and Changes

COMMAND for Windows is a powerful tool to assist you as you perform the moves, adds, and changes (MACs) that are essential operations in working with network components. You use the COMMAND Network Documentation System to document all the MACs you do so that you can capture, track, find, and analyze crucial information about network components and relationships among them.

### Adding Equipment

The add equipment function in COMMAND for Windows lets you add devices such as workstations, frame relay cards, cables, and hubs to the repository. When the COMMAND Network Documentation System is being set up at your site, you can use COMMAND for Windows to load the repository in bulk-add operations. Bulk-add operations make use of name patterns that increment the equipment IDs for multiple devices. For example, you can perform bulk-add operations to load the repository with multiple workstations and Ethernet cards. You can use other methods besides the Add Equipment function to help load the repository. These other methods include importing equipment or connections from a file or cloning an existing equipment configuration and importing it from a file. Please see also “Importing Equipment or Connections” and “Cloning Equipment and Connections” in Chapter 4, Loading Information into the Repository.

Once the COMMAND Network Documentation System is running at your site, you can perform and document MACs on your network components. When you get new equipment, you can use the add




equipment function in COMMAND for Windows to add individual devices such as a new hub. For example, if 20 people join your organization and you purchase a new hub to support their work on the network, you can use Add Equipment to add the new hub to the repository.

You can add one or more devices to one location, or to multiple locations. For example, you can use a name pattern such as NYC-HUB-~~~ to add five hubs named NYC-HUB-01 to NYC-HUB-05 in one location, and five more hubs named NYC-HUB-06 to NYC-HUB-10 in a second location.

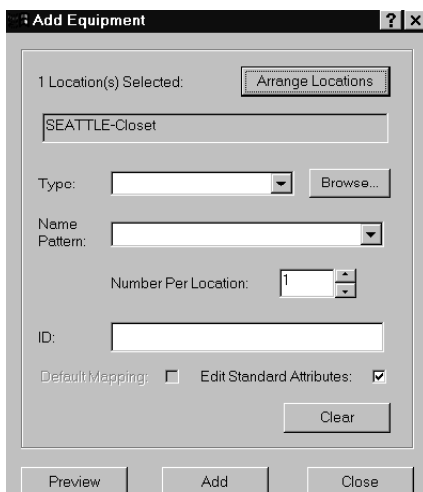
As you add equipment, you can edit attributes for devices you add. You can use these attributes to track information such as maintenance contracts. The attribute tables must be set up for you with COMMAND Administrator before you begin editing attributes.

### *To add a single device*

You can add a single device to the repository, or you can add multiple devices.

1. Select a location to which you want to add a single device.
2. Click  on the toolbar, or choose Equipment from the Components menu, and then choose Add from the submenu.

**FIGURE 5-1** ADD EQUIPMENT DIALOG



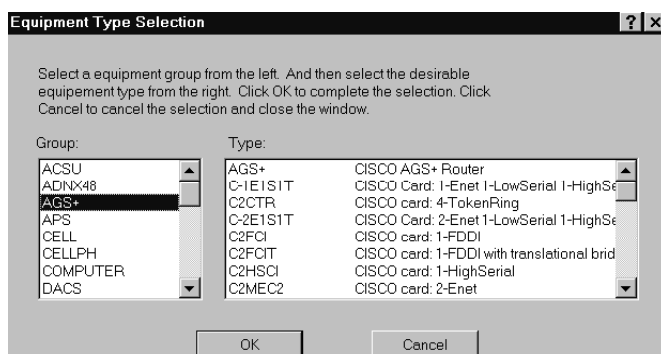
- In the Add Equipment dialog, you must set the type of equipment that you want to add.

In the Type box, enter a specific type, or select an existing type from the drop-down list.

OR

Click Browse to select from a list of groups of equipment types. In the Equipment Type Selection dialog, select an equipment group on the left, and then select an equipment type in the list on the right. Click OK when you have selected the type you want.

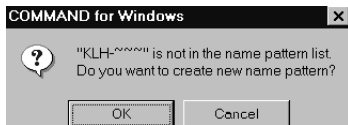
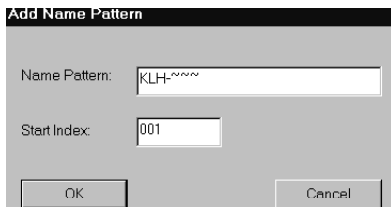
**FIGURE 5-2 EQUIPMENT TYPE SELECTION DIALOG**



The type you entered or selected is added to the Type box in the Add Equipment dialog.

- You can enter a new name pattern, use an existing pattern, or enter a specific name for the new device's equipment ID. The pattern or name for the equipment ID can be up to 64 alphanumeric characters.

If you want to enter a new name pattern, enter it in the Name Pattern box, using tildes (~) anywhere in the pattern to increment the ID. Then press Tab. A message asks you to confirm the new pattern. Click OK. In the Name Pattern dialog, click in the Name Pattern box if you want to change the pattern you entered, or click in the Start Index box and enter a starting number for the pattern. Click OK. The new name pattern is displayed in the ID box in the Add Equipment dialog.

**FIGURE 5-3 NEW PATTERN MESSAGE****FIGURE 5-4 ADD NAME PATTERN DIALOG**

OR

If you want to use an existing name pattern, select a name pattern from the drop-down list in the Name Pattern box. The name pattern is displayed in the ID box.


OR

If you want to enter a specific name, enter it in the ID box.

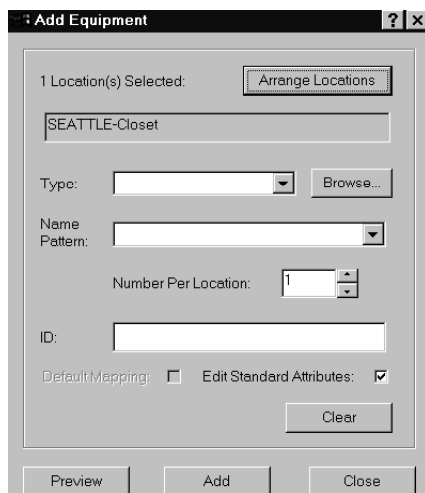
5. Select the Default Mapping option if you want to set default mapping on for ports on the device.
6. Select the Edit Standard Attributes option if you want to edit the existing attributes for this device.
7. You can preview the equipment you're adding with the Preview button, or click Add to add the equipment to the locations you selected. When you click Add, a progress bar below the grid shows the progress of adding equipment, and then a message asks if you want to review the results. If you encounter errors, you should check the status. You can continue adding equipment, or click Close to close the Add Equipment dialog.

### *To add multiple devices*

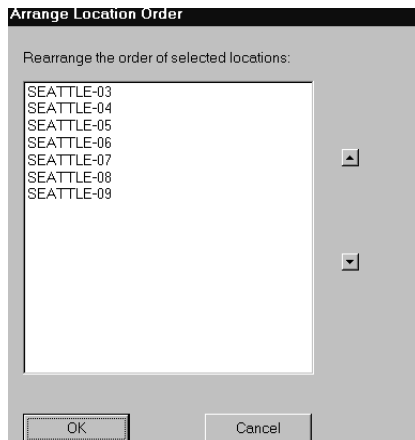
You can add a single device to the repository, or you can add multiple devices.

1. Select a location or locations to which you want to add multiple devices.
2. Click  on the toolbar, or choose Equipment from the Components menu, and then choose Add from the submenu.

**FIGURE 5-5** ADD EQUIPMENT DIALOG



3. In the Add Equipment dialog, you can click Arrange Locations if you want to rearrange the order in which locations are associated with equipment IDs. In the Arrange Locations dialog, use the up and down arrow buttons to set the order of the locations in the list box, and then click OK.

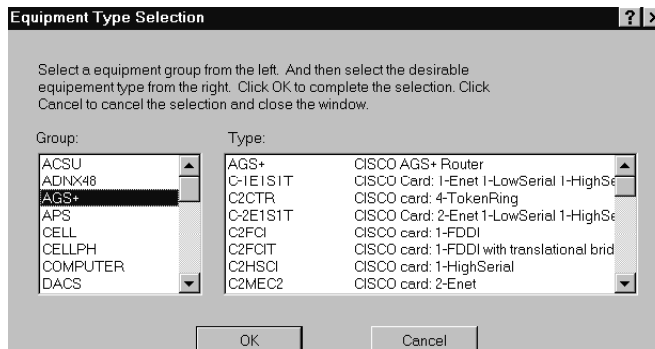
**FIGURE 5-6 ARRANGE LOCATIONS DIALOG**

4. In the Add Equipment dialog, you must set the type of equipment that you want to add.

In the Type box, enter a specific type, or select an existing type from the drop-down list.

OR

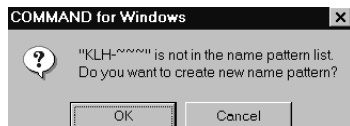
Click Browse to select from a list of groups of equipment types. In the Equipment Type Selection dialog, select an equipment group on the left, and then select an equipment type in the list on the right. Click OK when you have selected the type you want.

**FIGURE 5-7 EQUIPMENT TYPE SELECTION DIALOG**

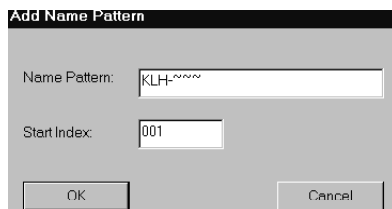
The type you entered or selected is added to the Type box in the Add Equipment dialog.

5. Set a name pattern for the new equipment. The pattern for the equipment IDs can be up to 64 alphanumeric characters.  
 If you want to enter a new name pattern, enter it in the Name Pattern box, using tildes (~) anywhere in the pattern to increment the ID for each device. Then press Tab. A message asks you to confirm the new pattern. Click OK. In the Name Pattern dialog, click in the Name Pattern box if you want to change the pattern you entered, or click in the Start Index box and enter a starting number for the pattern. Click OK.

**FIGURE 5-8 NEW PATTERN MESSAGE**



**FIGURE 5-9 ADD NAME PATTERN DIALOG**



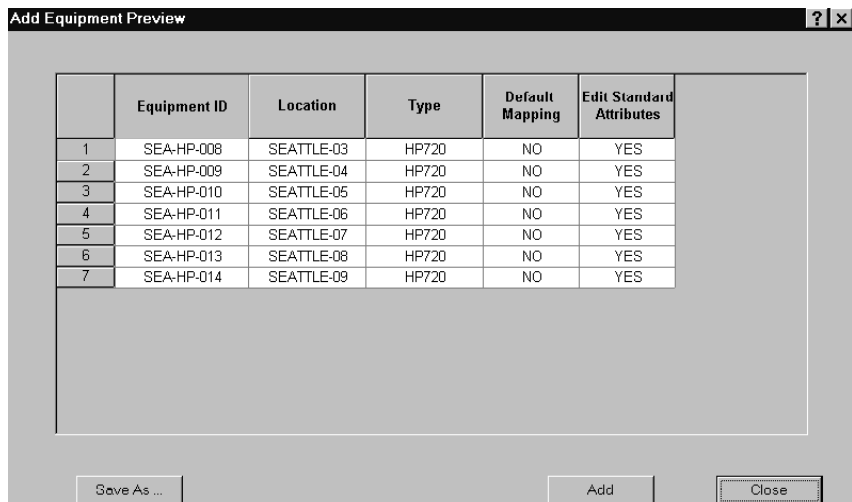
*OR*

If you want to use an existing name pattern, select a name pattern from the drop-down list in the Name Pattern box.

The name pattern you entered or selected is displayed in the ID box in the Add Equipment dialog.

6. Set the number of devices to add to each location in the Number Per Location box.

7. Select the Default Mapping option if you want to set default mapping on for ports on the equipment.
8. Select the Edit Standard Attributes option if you want to edit the existing attributes for this equipment.
9. You can preview the equipment you're adding with the Preview button, or click Add to add the equipment to the locations you selected. When you click Add, a progress bar below the grid shows the progress of adding equipment, and then a message asks if you want to review the results. If you encounter errors, you should check the status. You can continue adding equipment, or click Close to close the Add Equipment dialog.

**FIGURE 5-10 ADD EQUIPMENT PREVIEW**

# INDEX

equipment (*continued*)

Equipment view (*continued*)

locations (*continued*)

ports (*continued*)

## A

Action Request System, 6-6

Add Equipment button, 5-3, 5-6

Add Equipment dialog, 5-3, 5-6

Add option on Ports submenu, 5-15

Add Ports dialog, 5-15

adding equipment, 4-2, 4-3, 5-2, 5-6

    bulk-adding, 4-2, 4-3, 5-2

    editing attributes, 5-2

adding ports, 5-14, 5-16

Administrator, 1-4

Adobe Acrobat Reader 3.0, 3-39

A-end, 6-1, 6-3

API Gateway, 1-4

Arrange Locations dialog, 5-6

arranging equipment order, 5-28, 5-33,  
5-38

attribute tables, 2-9

attributes, 2-9, 5-3, 5-6, 5-10, 6-5

    definition, 2-9

    editing, 5-3, 5-6, 5-10

    saving, 5-10

    troubleshooting with, 5-10, 6-5

    uses, 5-10

auto-discovery equipment, 2-6

## B

buttons, 3-6, 3-7, 3-8, 3-15, 3-24, 3-27,  
3-31, 3-32, 3-34, 3-35, 3-36, 5-56

    Copy, 3-34

    Find Equipment, 3-29

    Find Location, 3-15

    Open Project, 3-6

    Print, 3-36

    Print Preview, 3-35

    Refresh Display, 3-8

    Save As, 3-35

    Select All, 3-32

    Show Connections, 3-24

    toolbar, 3-6

## C

cable IDs, 2-8, 5-41, 5-43, 5-48

cable lines, 2-9, 5-22, 5-41, 5-43, 5-47

cable types, 5-41, 5-43, 5-48



- cables, 2-8, 2-9, 5-24, 5-41, 5-43, 5-45, 5-47, 5-53
  - deleted from repository, 5-53
  - generic, 2-8, 5-41
  - selecting in connections, 5-22, 5-24
  - standard, 2-8, 5-24, 5-43, 5-47
- Cabletron Spectron interface, 1-1
- CCIs, 3-37, 3-38
  - arguments for, 3-38
  - COMMAND system administrator and, 3-37
  - creating, 3-37
  - running, 3-37, 3-38
- change logs, 3-6, 3-36, 3-37
  - closing, 3-36, 3-37
  - names, 3-6
  - opening, 3-36, 3-37
- clients, 3-2, 3-3
  - running multiple, 3-2, 3-3
- cloning, 4-10, 4-12
  - connections, 4-10
  - equipment, 4-10, 4-12
- Close Change Log option on File menu, 3-37
- Close Project option on File menu, 3-6
- closing projects, 3-5
- column width, 3-9
- COMMAND Administrator, 1-4, 2-2, 3-36, 5-10
  - defining attributes, 5-10
  - viewing change logs, 3-36
- COMMAND API Gateway, 1-4
- COMMAND attribute tables, 2-9
- COMMAND database, 1-1, 1-3, 1-4, 1-6, 2-2
  - setup, 2-2
- COMMAND for Windows, 3-2, 3-3, 6-10
  - documenting a network, 5-1
  - online documentation, 3-38
  - online help, 3-38
  - overview, 2-2
  - quitting, 3-3
  - running multiple clients, 3-2
  - starting, 3-2
  - technical support, 6-10
  - World Wide Web site, 6-10
- COMMAND HelpDesk, 6-6, 6-8
  - example, 6-8
  - troubleshooting, 6-6
- COMMAND InfoManager, 1-6
- COMMAND Network Documentation System, 1-1, 1-3, 1-4, 1-6, 1-7, 2-1, 2-3
  - setup, 2-2
- COMMAND Online Documentation
  - option on Help menu, 3-39
- COMMAND product family, 1-1
- COMMAND ReportWorks, 1-7
- COMMAND Server, 1-3
  - licensing, 1-3
- COMMAND system administrator, 2-2
- COMMAND View, 1-6
- COMMAND Viewer for Windows, 1-9, 2-4, 3-3, 3-5
  - quitting, 3-5
  - running multiple clients, 3-3
  - starting, 3-3