

# Installing JavaHelp

## *Knopf Online Tips & Tricks Series*

**WARNING:** The instructions on this page apply to JavaHelp 1.1.2 only. DO NOT FOLLOW THESE INSTRUCTIONS if you are installing JavaHelp 1.1.3. Instead, for JavaHelp 1.1.3, follow the instructions provided by Sun.

Many Help authors have reported various difficulties in getting the JavaHelp software—and other components required for successful JavaHelp authoring—successfully installed with the Java 2 SDK v 1.3. The following procedure describes how to install the latest JavaHelp software on a Windows PC.

**Note:** This procedure will be useful to you if you want to install and use JavaHelp 1.1 (or 1.1.1) with the Java 2 SDK v 1.3 (aka the “JDK 1.3”). If you want to use an earlier version of the JDK, you do not need to follow the steps described here.

- 1 If you have previously attempted to install the JDK and/or the JavaHelp software and your installation attempts were unsuccessful, be sure to completely remove any partial or failed installation from your system before you proceed.

The exact steps for un-installing the JDK and the JavaHelp software depend on your operating system and which versions you have installed. However, you can generally use Add/Remove Programs in Control Panel to remove both components. Search your local hard disk for copies of `java.exe` to see if you still have any “extra” copies installed.

- 2 Download the following files:

- **Java Runtime Environment v 1.2.2** (approximately 6MB)

Filename: `jre-1_2_2_007-win.exe`

Available at: <http://java.sun.com/products/jdk/1.2/jre>

**Note:** You will need to download and install JRE v 1.2.2 even though you plan to use the Java 2 SDK v 1.3. You need 1.2.2 in order to install JavaHelp successfully.

- **Java 2 SDK, Standard Edition, v 1.3** (approximately 30MB)

Filename: `j2sdk1_3_0-win.exe`

Available at: <http://java.sun.com/j2se/1.3>

- **JavaHelp 1.1** (self-extracting, approximately 8MB).

Filename: `javahelp1_1-win-no_rt.exe`

Available at:

[http://java.sun.com/products/javahelp/download\\_binary.html](http://java.sun.com/products/javahelp/download_binary.html)

**Note:** Several downloads are available from this page. Be sure you download the one labeled `JavaHelp 1.1 (self-extracting)`.

- **JavaHelp 1.1.1** (patches, approximately 1MB)

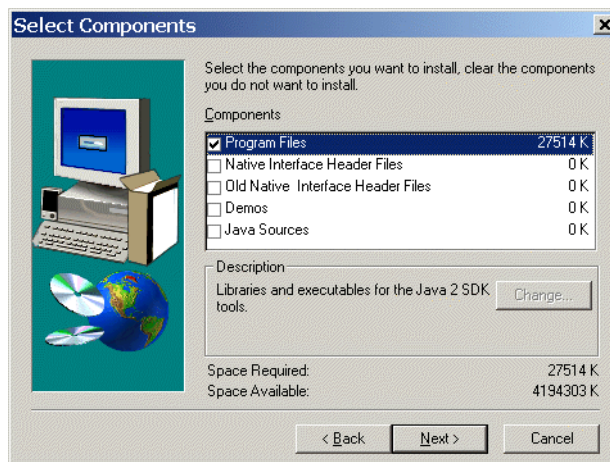
Notes

Filename: javahelp-1\_1\_1.zip

Available at:

[http://java.sun.com/products/javahelp/download\\_binary.html](http://java.sun.com/products/javahelp/download_binary.html)

- 3 Install the Java Runtime Environment v 1.2.2 as follows:
  - a Double-click the `jre-1_2_2_007-win.exe` file that you downloaded in step 2.
  - b Accept the license agreement and the other default settings suggested by the installer. (Optionally, you can specify an installation directory if you don't like the default suggested by the installer.)
  - c Click **Finish** when the installer finishes copying files.
- 4 Install the Java 2 SDK, Standard Edition, v 1.3 (aka the "JDK 1.3") as follows:
  - a Double-click the `j2sdk1_3_0-win.exe` file that you downloaded in step 2.
  - b Accept the license agreement.
  - c Optionally, you can specify an installation directory if you don't like the default suggested by the installer.
  - d In the **Select Components** dialog box, de-select all components except **Program Files**. (For JavaHelp authoring, you do not need to install the other listed components.)



- e Click **Finish** when the installer finishes copying files.
- 5 Modify the PATH variable on your system to ensure that the first directory listed in the PATH is the directory containing the JRE 1.2.2 that you installed in step 3.

For example, if your current PATH is:

```
%SystemRoot%\system32;%SystemRoot%
```

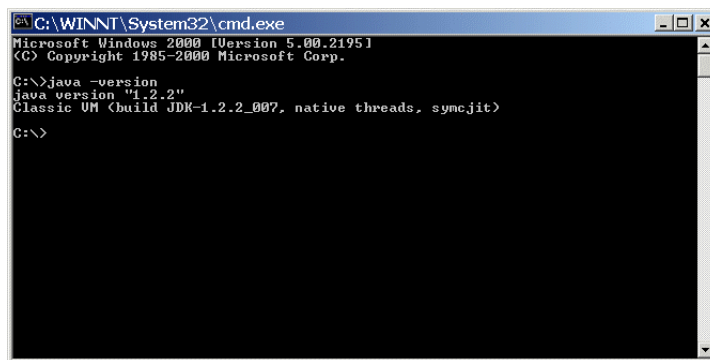
change it to:

```
C:\Program
Files\Javasoftware\JRE\1.2\bin;%SystemRoot%\system32;%SystemRoot%
```

- If you are using Windows 2000, you can change your path in the **System Properties** control panel. Choose **Start>Settings>Control Panel>System**, then click the **Advanced** tab, and finally click the **Environment Variables** button.
  - If you are using Windows NT4, you can change your path in the **System Properties** control panel. Choose **Start>Settings>Control Panel>System**, and then click the **Environment** tab.
  - If you are using Windows 95, Windows 98 or Windows ME, you can change your path by editing the AUTOEXEC.BAT file.
- 6 To confirm that you have successfully changed the path, open a command prompt window and enter the following command:

```
java -version
```

Your output should look something like this:



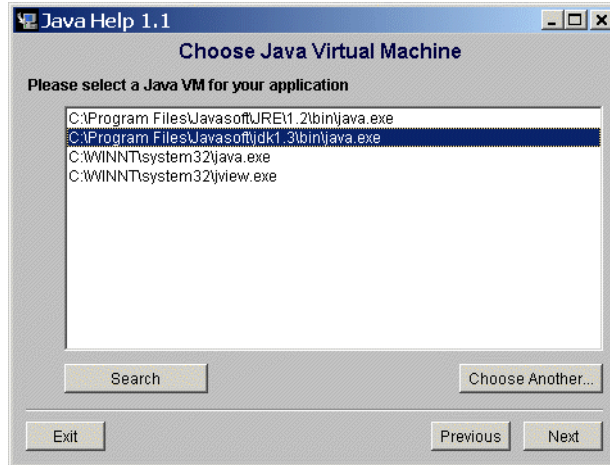
```
C:\WINNT\System32\cmd.exe
Microsoft Windows 2000 [Version 5.00.2195]
(C) Copyright 1985-2000 Microsoft Corp.

C:\>java -version
java version "1.2.2"
Classic VM (build JDK-1.2.2_007, native threads, syncjit)

C:\>
```

If the Java version is identified as “1.2.2,” you have successfully changed your PATH variable.

- 7 Close the command prompt window by entering the following command:
- ```
exit
```
- 8 Install JavaHelp 1.1 as follows:
- a Launch the JavaHelp installer by double-clicking the `javahelp1_1-win-no_rt.exe` file that you downloaded in step 2.
  - b Click **Next** in each of the first three dialog boxes the installer displays.
  - c In the **Choose Install Folder** dialog box, click **OK** to accept the default, or specify an alternate directory in which to install JavaHelp.
  - d Click **Next** in two successive dialog boxes.
  - e In the **Choose Java Virtual Machine** dialog box, click to select the version of `java.exe` that is installed in your JDK 1.3 directory, as shown in the following illustration:



**f** Click **Next**.

**g** Click **Install** to begin the installation.

**h** Click **Done** when the installer finishes copying files.

- 9** Reverse the change you made to the PATH environment variable in step 5.

For example, if you changed your PATH to:

```
C:\Program
Files\Javasoft\JRE\1.2\bin;%SystemRoot%\system32;%SystemRoot%
```

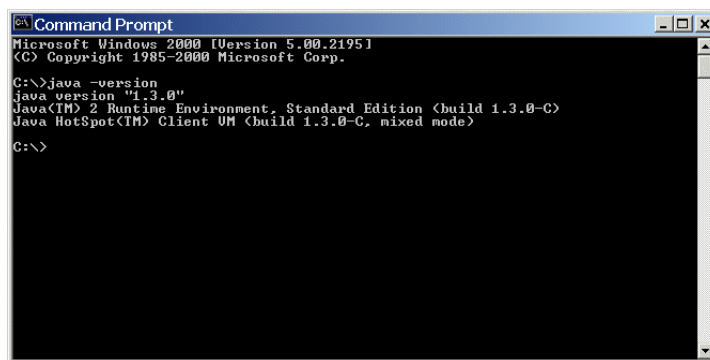
change it back to:

```
%SystemRoot%\system32;%SystemRoot%
```

- 10** To confirm that you have successfully changed the path, open a command prompt window and enter the following command:

```
java -version
```

Your output should look something like this:



If the Java version is identified as “1.3.0,” you have successfully changed your PATH variable.

- 11** Install the JavaHelp 1.1.1 patches, following the instructions contained in the README1.1.1.html file included with the JavaHelp software.

- 12 Install any software you plan to use to author JavaHelp—for example, RoboHelp, WebWorks Publisher, or Dreamweaver.

**Note:** Once you have successfully installed the JavaHelp software, you may un-install JRE v 1.2.2. However, this is not recommended because you will need to have JRE v 1.2.2 installed if you ever want to un-install the JavaHelp software.

Notes